

What is (E)JES?



(E)JES is a system management tool that provides you with information to monitor, manage, and control your JES2 and/or JES3 z/OS® JESplex.

With (E)JES, you can:

- Control job processing (hold, release, cancel, and purge jobs).
- Monitor jobs while they are running.
- Browse jobs without printing.
- Control JESplex parameters, initiators, job classes, and job class groups.
- Control printers, punches, functional subsystems, and NJE devices.
- Control your JES spool configuration.
- Monitor and control JES resources.
- Control WLM scheduling environments and resources.
- Control WLM enclaves and z/OS UNIX processes.
- Control the z/OS Health Checker.
- Issue system commands.

(E)JES consists of panels that provide immediate and current information about jobs, printers, queues, and resources in a z/OS JESplex. With (E)JES, you can easily

(E)JES Entry Panel

```
Jobs Resources Devices Tools Filter View Options Help
2009/08/19 (2009.231) (E)JES Entry Panel MVS60/S60 V4R7.0 15:46
Command ==>
Default Command ==>
More: +
Job Names/Nums ==> ==> ==> ==>
Owner IDs ==> ==> ==> ==>
Origins ==> ==> ==> ==>
Destinations ==> ==> ==> ==>
Job Classes ==>
Sysout Classes ==>
Level of Detail ==> MIN (MIN or MAX)
Default Sort ==> TIME (STD,NAME,NUM,PTY,TIME)
Default SortDir ==> A (Ascending or Descending)
Dynamic Update ==> YES (YES or NO)
Display Jobs ==> YES (YES or NO)
Display STCs ==> YES (YES or NO)
Display TSUs ==> YES (YES or NO)
Display ATXs ==> YES (YES or NO)
F1=Help F2=Split F3=Exit F4=Return F6=Book F7=Backward
F8=Forward F9=Swap F10=Actions F12=Cancel
```

access and modify all attributes for jobs, started tasks, TSO users, APPC/MVS transaction jobs, z/OS UNIX processes running anywhere in your JESplex. Simple commands and rapid accessibility not only save you time, but also make interaction with your JES subsystems easy.



```

ACTIVITY PHXHQ2(S60) Paging 10 SIO 22 CPU 33 Row 1 of 303
Command ==> Scroll ==> CSR
Cmd JobName StepName ProcStep JobID ASID Pos OP Real Paging ExCP CPU%
*****/
Procedure Step Name
*MASTER* *MASTER* Name of JCL procedure step 11MB .00 .00 .03
*MASTER* *MASTER* currently executing 12MB .00 .00 .04
*MASTER* *MASTER* 12MB .00 .00 .05
ALLOCAS ALLOCAS 0013 N/S FF 4MB .00 .00 .00
ALLOCAS ALLOCAS 0013 N/S FF 9MB .00 .00 .00
ALLOCAS ALLOCAS 0013 N/S FF 11MB .00 .00 .00
ANTAS000 ANTAS000 IEFPROC 0000 N/S FE 912KB .00 .00 .00
ANTAS000 ANTAS000 IEFPROC 0000 N/S FE 1MB .00 .00 .00
ANTAS000 ANTAS000 IEFPROC 0000 N/S FE 5MB .00 .00 .00
ANTMAIN ANTMAIN IEFPROC 000C N/S FF 916KB .00 .00 .00
ANTMAIN ANTMAIN IEFPROC 000C N/S FF 1MB .00 .00 .00
ANTMAIN ANTMAIN IEFPROC 000C N/S FF 5MB .00 .00 .00
APPC APPC APPC 0021 N/S FE 1MB .00 .00 .01
APPC APPC APPC 0021 N/S FE 2MB .00 .00 .00
APPC APPC APPC 0021 N/S FE 6MB .00 .00 .00
ARCIBKUP ARCIBKUP IEFPROC J0451865 008E N/S FE 412KB .00 .00 .00
F1=Help F2=Split F3=Exit F4=Find F5=Refresh F6=Book F7=Up
F8=Down F9=Swap F10=Left F11=Right F12=Cancel

```

Benefits of Using (E)JES

Improved Job Management

(E)JES lets you easily manage jobs in your spool. It gives immediate, up-to-date information, such as:

- The status, class, priority, date, and time of a job
- All jobs on a queue, such as input, hold, or output
- Job details no matter where it is in the JESplex
- Reasons a job is delayed
- Output from a job as it is created no matter where the job is running in the JESplex

Improved Output Management

(E)JES displays detailed information about output that is ready to be printed, including:

- The total number of lines to be printed
- Classes the output is assigned to
- Forms needed for printing
- Date the output was created

Improved Resource Management

(E)JES provides an effective way to manage resources.

- Control and manage JESplex parameters, JES-managed initiators (JES2), job classes, and job class groups (JES3)
- Control NJE nodes
- Control and manage WLM resources
- Control WLM enclaves and z/OS UNIX processes
- Control the z/OS Health Checker
- Control and manage system requests
- Reduce problem management time
- Issue system commands

Activity Display

Improved User Access Control

You can tailor (E)JES to meet the needs of your users and your security requirements. You can control:

- Who can use (E)JES
- Which users can issue (E)JES control commands
- Which users can issue system commands
- For which jobs users can issue commands
- Which columns to display on panels
- Which jobs and output to display on panels

You can implement these controls internally or through the SAF and an external program such as RACF®.

Improved Device Control

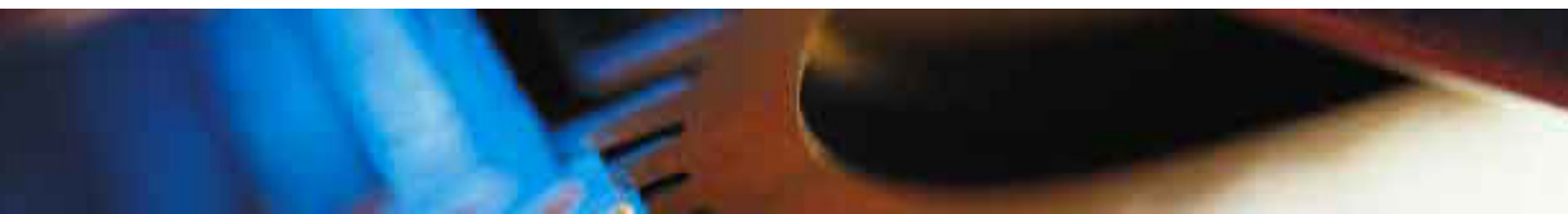
With (E)JES, you have a single interface to some of the most important devices on your system:

- Local and remote printers and punches
- Spool partitions and volumes
- JES3 functional subsystems

Improved Automation of Routine Tasks

The (E)JES Application Programming Interface (API) and companion REXX API make powerful (E)JES functionality available to programs, allowing users to:

- Create programs to perform routine tasks
- Use installation-written applications to obtain system information.
- Use System REXX to access “smart” tools and commands without TSO/E access.



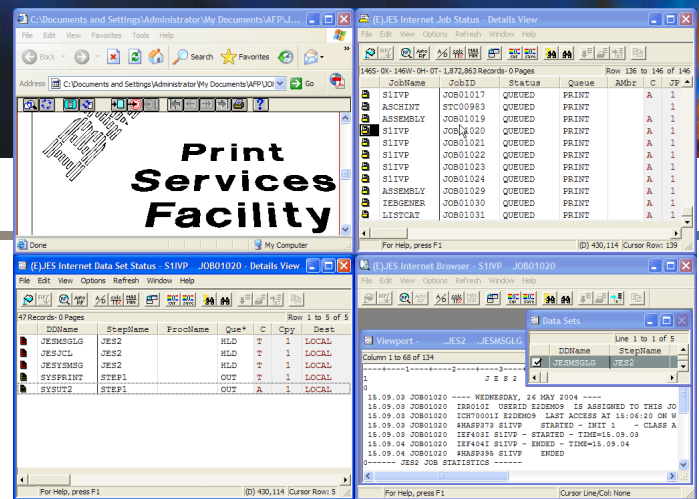
Workstation Component

(E)JES has a client/server, object-oriented user interface for managing your z/OS JESplex from a personal computer.

Communicating directly with the mainframe, (E)JES takes robust functionality, previously available only to 3270 users, and integrates it with powerful, easy-to-use, standard workstation interfaces to create a best-of-both-worlds solution.

Some Important Features

- (E)JES allows users to manage multiple z/OS servers simultaneously. Servers can be JES2, JES3, or a combination of both. (E)JES maintains a common management interface.
- (E)JES lets you maintain system integrity via your existing security definitions.
- (E)JES employs a familiar point-and-shoot interface, allowing your users to be productive immediately.
- (E)JES seamlessly integrates the functions of IBM's ISPF client/server product to provide a complete workstation development environment. All of the power of ISPF is available without the traditional need for a TSO/E address space.



Multitasking Windows

Visit us at <http://www.phoenixsoftware.com> to learn more about our products and download a free trial of (E)JES.



Phoenix Software International (PSI) was formed in 1978 and is one of the world's leading systems software development companies. PSI offers a suite of software utilities operating on IBM and compatible mainframes and workstations.

PHOENIX SOFTWARE INTERNATIONAL
sales@phoenixsoftware.com
(310) 338-0400
FAX (310) 338-0801

The "P" logo, Phoenix Software International, and (E)JES are registered trademarks of Phoenix Software International.

IBM, RACF, and z/OS are registered trademarks of the International Business Machines Corporation.

CA-Top Secret is a registered trademark of Computer Associates International, Inc.

UNIX is a registered trademark of The Open Group.

All other trademarks are acknowledged and respected.

© Copyright 2004-2010 Phoenix Software International, Inc.